

Navman Wireless

MIDLAND
TELECOM

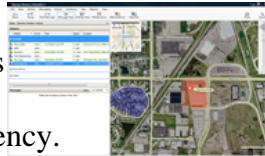
TELEPHONE SYSTEMS
OF NEBRASKA, INC

Fleet Management Systems with Messaging & Integrated Navigation.

Locate - Monitor - Manage

Online AVL2

The core of the Navman wireless tracking system dramatically increases productivity and efficiency.



- Real-time vehicle tracking
- Wide area mapping down to street level
- Multi-user functionality
- Historic exception reporting and journey replay
- Daily activity reporting
- Find address function and postcode
- Geofencing
- Two way messaging options
- Unlimited users

Pass information to field staff.

MDT-860

Offers fixed cost, reliable and secure two-way messaging communication with your fleet.



- Low cost, two-way text messaging
- Status of free text messaging
- Customer selected preset replies
- Driver identification
- Information quickly and accurately
- Communication with one or all fleet members at once

Phone: 308-381-4000
Toll Free: 888-669-1931
Fax: 308-381-2801

3239 W 2nd St
P.O. Box 2151
Grand Island, NE 68802

www.midlandtelecom.net

Navman Wireless Will:

- Increase Productivity
- Lower Expenses
- Improve Safety
- Reduce Overtime

From analyzing historical performance data and driver activity (stops, mileage, idleness, etc.) to defining driver territories, Navman Wireless is everything you need to operate your fleet without missing a gear.

Track

Qube

A low-profile, vehicle-mounted satellite tracking device with various covert and low profile antenna options to suit every vehicle.



- Real-time GPS location
- Location, speed, direction, stops, entry/exit to specific areas, time and date.
- Accurate information provides a clearer picture
- Automatic time/distance activity updates and independent location queries

Accept and Go

M-Nav 650

Integrated tracking and navigation streamlines office workflows



- Full satellite navigation functionality
- Driver identification
- Provides staff with an accurate ETA to destination
- Monitor job completion rates. Less time, less confusion, less hassle
- Reduction in paper work
- Improved allocation of planned and reactive jobs
- Improved reaction time with the ability to dispatch the nearest vehicle to a job